



# GAT MONTHLY MEMBERSHIP PROGRESS REPORT

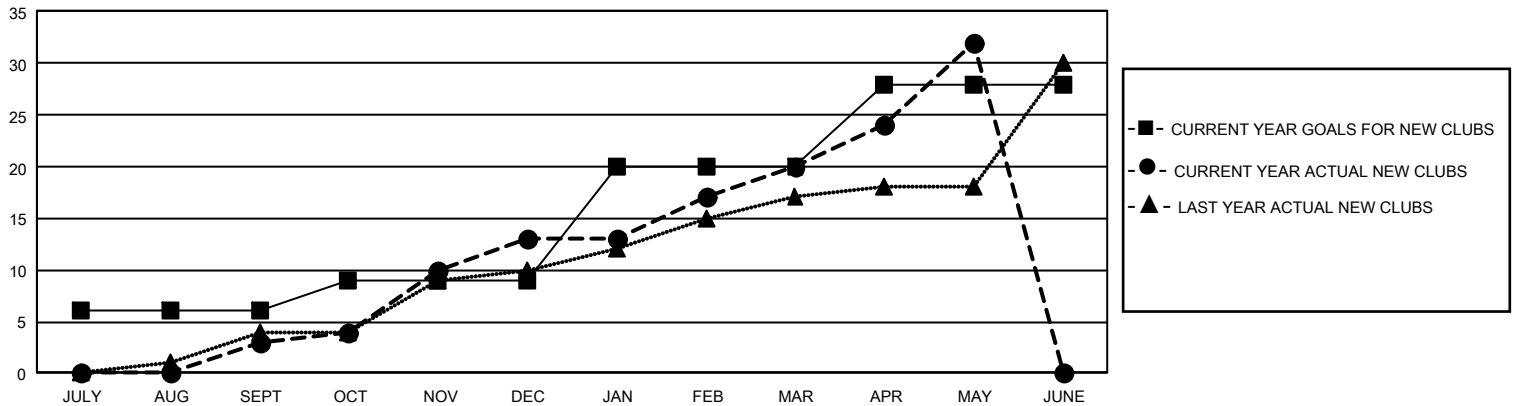
Results as of: 5/31/2025

## GMT Constitutional Area 3, Group D

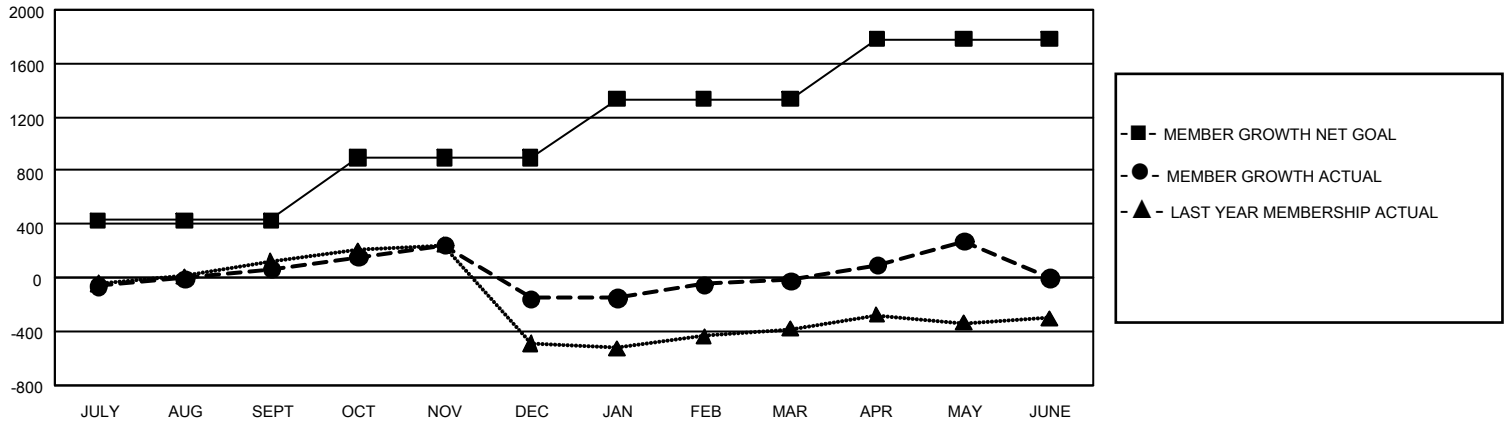
REPORT DOES NOT INCLUDE CLUBS IN UNDISTRICTED AREAS.

Clubs				Members			
RESULTS FOR 2024-2025				RESULTS FOR 2024-2025			
QUARTER	NEW CLUB GOAL	NEW CLUBS	DROPPED CLUBS	QUARTER	MEMBER GROWTH NET GOAL	MEMBER GROWTH ACTUAL	DROPPED MEMBERS ACTUAL (including transfers)
JULY/AUG/SEPT	18	3	10	JULY/AUG/SEPT	429	645	452
OCT/NOV/DEC	9	10	12	OCT/NOV/DEC	469	1,010	1,133
JAN/FEB/MAR	33	7	5	JAN/FEB/MAR	437	548	333
APR/MAY/JUNE	24	12	1	APR/MAY/JUNE	445	635	284

GOALS AND ACTUAL NEW CLUBS CUMULATIVE



GOALS AND ACTUAL MEMBERS CUMULATIVE



DROPPED CLUBS: 27

491 CLUBS OF 800 ADDED 1 OR MORE NEW MEMBERS

### GENDER DISTRIBUTION

MALE	7,038 (45.05%)
FEMALE	8,582 (54.94%)
NON BINARY	1 (0.01%)
PREFER NOT TO ANSWER	1 (0.01%)

### DROPPED MEMBERS

DECEASED	96
CLUB CANCELLED	335
OTHER	1,749
<b>TOTAL</b>	<b>2,180</b>

[CLICK HERE FOR CUMULATIVE MEMBERSHIP DATA](#)

TOTAL FAMILY UNIT MEMBERS 4,890

FAMILY MEMBERS PAYING HALF DUES 2,755